



# Informatics Nursing Trivia

NEXT SLIDE

What are three different factors that contribute to software usability?

# System Life Cycle Design

## Category

Quality,  
Speed, and  
Accuracy

**INCORRECT**

Readability,  
Simplicity, and  
Graphics

**INCORRECT**

Learnability,  
Memorability, and  
Discovery

**CORRECT!**



**NEXT SLIDE**

Qualitative data are data described verbally or graphically, and the results are subjective, depending on observers to provide information.



# Data Management and Health Care Technology

## Category

**TRUE**

**CORRECT!!!**

**FALSE**

**INCORRECT**

**NEXT SLIDE**

Bandura's theory of social learning proposes that learning develops from observation, organizing, and rehearsing behavior that has been modeled. What are the four conditions required for modeling?

# Foundations of Practice

## Category

Environment,  
Antecedents,  
Enforcement, and  
Rewards

**INCORRECT**

Awareness, Receptivity,  
Adaptation, and  
Replication

**INCORRECT**

Attention, Retention,  
Reproduction, and  
Motivation

**CORRECT!**



**NEXT SLIDE**

Black Box is a form of functional testing that determines what?

# System Design Life Cycle

## Category

If an input results in the correct output

**CORRECT!**

If a graphical user interface meets end user expectations

**INCORRECT**

If the system can function after introduction of a new component

**INCORRECT**



**NEXT SLIDE**

What are the  
three factors to  
consider in a  
physical  
database design

# Data Management and Health Care Technology

## Category

Operating system,  
RAM, and query  
language

**INCORRECT**

Queries, Updates, and  
Performance

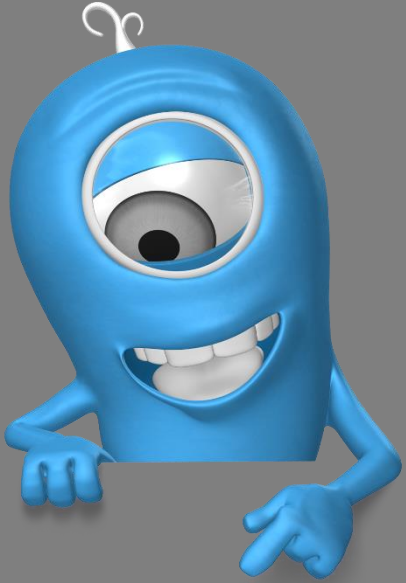
**CORRECT!**

Redundancy, operating  
system, and security

**INCORRECT**



**NEXT SLIDE**



Structured query language (SQL) is a fourth-generation programming language that includes which elements?

# System Life Cycle Design

## Category

Clauses, Expressions,  
Predicates, Queries,  
and Statements

**CORRECT!**

HL-7 structure, If-Then  
logic, Nodal  
reasoning, and  
Boolean truth values

**INCORRECT**

ANSI paradigm, Nodal  
reasoning, Command  
structure, and Boolean  
truth values

**INCORRECT**

**NEXT SLIDE**

What are three main threats for information stored in computerized systems?

# Data Management and Health Care Technology

## Category

Theft, fraud, and malware

**INCORRECT**

Degradation, piracy, and corruption

**INCORRECT**

Quality, Availability, and Confidentiality

**CORRECT!**



**NEXT SLIDE**



The theory of reasoned action developed by Martin Fishbein and Icek Ajzen in 1975 is based on the premise that people's actions can be predicted based on their attitude and perceptions regarding a given action. What are the 3 basic concepts of the theory?

# Foundations of Practice

## Category

External Influence,  
Internal Determination,  
and Perceived Threat

**INCORRECT**

Attitudes, Subjective  
Norms, and  
Behavioral Intention

**CORRECT!**

Social Determination,  
Decisive Aptitude,  
and Enforced Norms

**INCORRECT**



**NEXT SLIDE**

All computer software is written in a specific programming language which have been divided into five separate generations based on how close they mimic human language. What was the first-generation programming language?

# System Design Life Cycle

## Category

Binary

**CORRECT!**

COBOL

**INCORRECT**

Assembler Language

**INCORRECT**



**NEXT SLIDE**

Relational  
databases have  
largely been  
replaced with  
Hierarchical  
databases.

# Data Management and Health Care Technology

## Category

**TRUE**

INCORRECT

**FALSE**

**CORRECT!**

**NEXT SLIDE**



Necessary steps when upgrading or implementing an information system are:

- Planning and administration of project
- Delivery of hardware and software
- Program installation
- Policies and Procedures
- Training
- Maintenance and support

# Systems Design Life Cycle

## Category



**TRUE**

**CORRECT!!!**

**FALSE**

**INCORRECT**

**NEXT SLIDE**

Discrete data are usually used to represent the count of something and are those having a specific value and cannot be further quantified.



# Data Management and Health Care Technology

## Category

**TRUE**

**CORRECT!!!**

**FALSE**

**INCORRECT**

**NEXT SLIDE**

Change theory was developed by Kurt Lewin and modified by Edgar Schein. This management theory is based on three stages:

1. Motivation to change (unfreezing)
2. Desire to change (unfrozen)
3. Development of permanent change (refreezing)

## Foundations of Practice Category



**TRUE**

**CORRECT!!!**

**FALSE**

**INCORRECT**

**NEXT SLIDE**

Attributes are assigned to data that an organization collects. What are the two important pieces of information that must be assigned to attributes?

# Data Management and Health Care Technology

## Category

Name and Domain

**CORRECT!**

Value and Hierarchy

**INCORRECT**

Identifier and Unique Code

**INCORRECT**



**NEXT SLIDE**

Murray Bowen's family systems theory consists of 8 interrelated concepts:

1. Triangle theory
2. Self-differentiation
3. Nuclear family patterns
4. Projection within a family
5. Transmission
6. Emotional isolation
7. Sibling order
8. Emotional process



## Foundations of Practice Category

**TRUE**

**CORRECT!!!**

**FALSE**

**INCORRECT**

**NEXT SLIDE**



Systems integration testing (SIT) is a part of software/hardware testing that determines if hardware or software applications can work together. What are different approaches to SIT?

# System Design Life Cycle

## Category

Big Bang,  
Top Down, and  
Bottom Up

**CORRECT!**

Unit,  
Integrated, and  
User Acceptance

**INCORRECT**

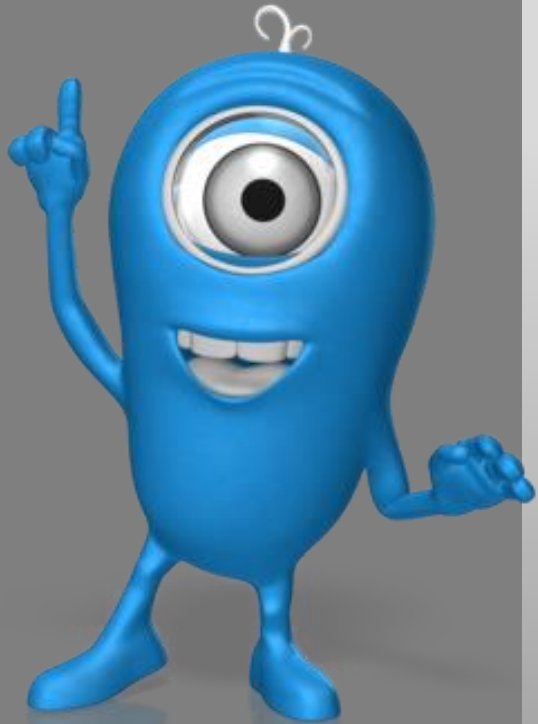
Proof of Concept,  
Integrated, and  
Workflow Dress Rehearsal

**INCORRECT**



**NEXT SLIDE**

What areas are sometimes found to be deficient with a disaster recovery plan?



# Data Management and Health Care Technology

## Category

Clinician Compliance,  
Recovery Time,  
Communication, and  
Support

**INCORRECT**

Documentation,  
Equipment, Data  
Storage, and an  
Updated Plan

**CORRECT!**

Metrics, Redundancy,  
Communication, and  
Recovery Time

**INCORRECT**



**NEXT SLIDE**

What are the five types of malicious computer programs?

## Foundations of Practice

### Category

Viruses, Trojan Horses, Phishing Bots, Mimics, and Hostile Syntax

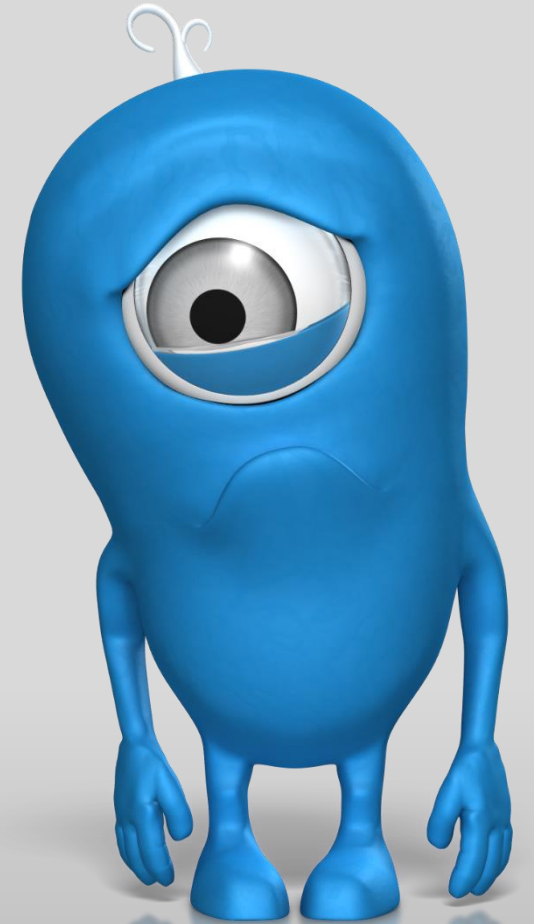
**INCORRECT**

Viruses, Worms, Trojan Horses, Logic Bombs, and Bacteria

**CORRECT!**

Malware, Viruses, Phishing Bots, SQL Injection, and Worms

**INCORRECT**



**NEXT SLIDE**

Closed systems are self-contained and isolated from the environment. With the exception of an external energy source, closed systems do not receive input from the environment and all output is contained within the system. In computing, when the source code is locked by the vendor, the program acts as a closed system.

## System Design Life Cycle Category

**TRUE**

**CORRECT!!!**

**FALSE**

**INCORRECT**



**NEXT SLIDE**

Clinical decision support systems (CDSS) are designed for non-patient care staff who provide a variety of supportive and administrative health care functions.



# Data Management and Health Care Technology

## Category

**TRUE**

**INCORRECT**

**FALSE**

**CORRECT!**

**NEXT SLIDE**

Bloom's taxonomy outlines behaviors necessary for learning. What are the three types of learning described by the theory?

# Foundations of Practice

## Category

Cognitive, Affective,  
and Psychomotor

**CORRECT!**

Asynchronous,  
Facilitated, and  
Independent

**INCORRECT**

Spontaneous,  
Vicarious, and  
Intentional

**INCORRECT**



**NEXT SLIDE**

Data conversion/  
Migration occurs  
when data are  
translated from  
one format to  
another. During  
implementation of  
a new system, data  
migration must  
occur for the new  
system to use  
legacy data. What  
are the primary  
stages to the  
migration of data?

# System Design Life Cycle

## Category

Setting scope,  
Smoke screen testing,  
and Execution

**INCORRECT**

Scrubbing,  
Aligning, and  
Packaging

**INCORRECT**

Planning,  
Performance, and  
Validation

**CORRECT!**



**NEXT SLIDE**



What are three tools that data mining uses to look for patterns?

# Data Management and Health Care Technology

## Category

Association Rule Mining, Classification, and Clustering

**CORRECT!**

Boolean Logic, Data Spikes, and Mnemonic Patterns

**INCORRECT**

Query Language, Redundant Loops, and Delphi Searches

**INCORRECT**



**NEXT SLIDE**



What are two main concerns for Informaticists related to the collection and storage of patient computer records ?



## Foundations of Practice Category

Integrity and  
Continuity

**INCORRECT**

Retrieval and  
Accuracy

**INCORRECT**

Privacy and  
Confidentiality

**CORRECT!**

**NEXT SLIDE**

Stand Alone Systems are also called dedicated or turnkey systems and are used only for a specific function that does not require connectivity.



# Data Management and Health Care Technology Category

**TRUE**

**CORRECT!!!**

**FALSE**

**INCORRECT**

**NEXT SLIDE**

The System Development Life Cycle is divided up into what four phases?



# System Design Life Cycle

## Category

Needs Assessment,  
System Selection,  
Implementation, and  
Maintenance

**CORRECT!**

Proposal,  
Planning,  
Execution, and  
Evaluation

**INCORRECT**

Needs Assessment,  
Proof of Concept,  
Testing, and  
Acceptance

**INCORRECT**

**NEXT SLIDE**

What are the four main categories of threat to a computer system which can incapacitate it?

# Foundations of Practice

## Category

Environmental  
Disasters, Human Error,  
Equipment Failure, and  
Human Mischief

**CORRECT!**

Circuit  
Overload/Surge,  
Malware, Moisture,  
and Human Error

**INCORRECT**

Viruses, Heat,  
Moisture, and Fine  
Particles (Dust)

**INCORRECT**



**NEXT SLIDE**

A user interface allows interaction between the user and the machine, permitting the user to make input and to see output as a result. Which are examples of user interfaces?

# System Design Life Cycle

## Category

Thin-Client, Full-Client, Handheld, and Projected

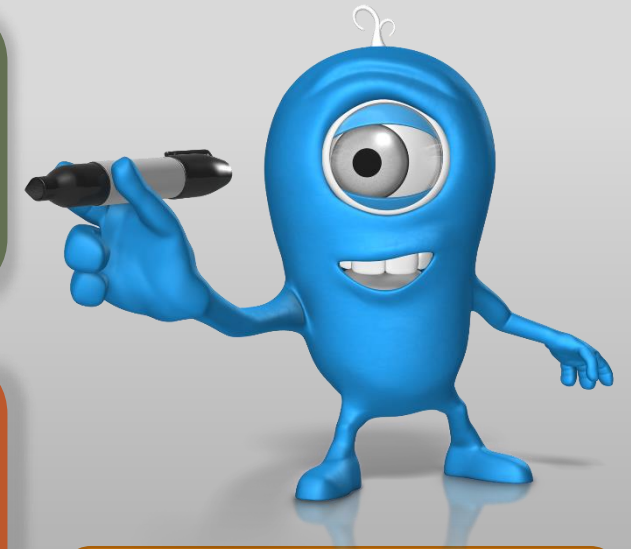
**INCORRECT**

High Resolution, Intuitive, Interactive, and Simultaneous

**INCORRECT**

Graphical User, Gesture, Natural Language, and Zero Input

**CORRECT!**



**NEXT SLIDE**

Data aggregation  
refers to :

# Data Management and Health Care Technology

## Category

The ability to  
reproduce data sets in  
a non-production  
environment.

**INCORRECT**

Secure storage of data  
that is highly  
sensitive.

**INCORRECT**

The collection and  
summation of data for  
further use.

**CORRECT!**



**NEXT SLIDE**

A simplistic definition of systems theory is that a system is more than the sum of its parts and it not equal to the function of its individual parts.



# System Life Cycle Design Category

**TRUE**

**CORRECT!!!**

**FALSE**

**INCORRECT**

**NEXT SLIDE**

Measures of averages locate the center point of a group of data. Mode is one of these measures that indicates?

# Data Management and Health Care Technology

## Category

The 50<sup>th</sup> percentile.

**INCORRECT**

The number occurring with the highest frequency.

**CORRECT!**

The average taken across the entire distribution of data.

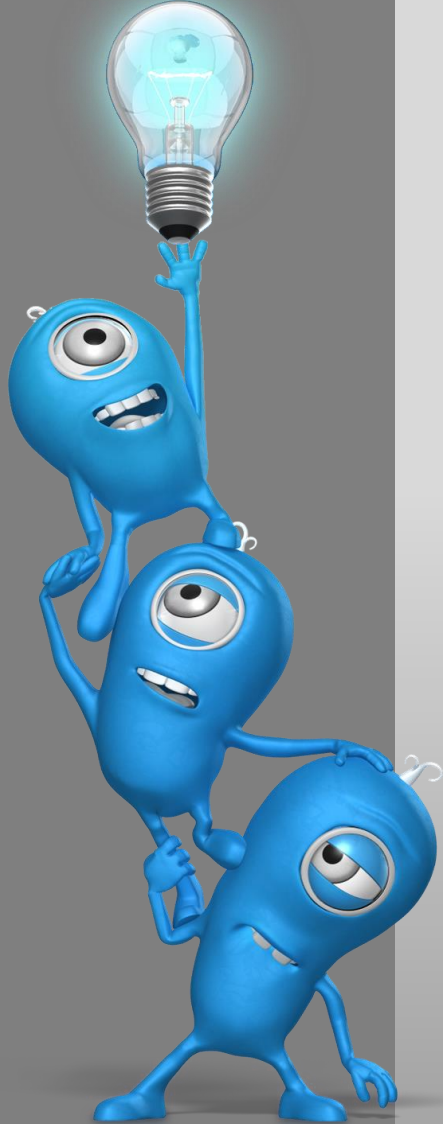
**INCORRECT**



**NEXT SLIDE**



What are four types of teaching models?



# Foundations of Practice

## Category

Classroom, Virtual, Asynchronous, and Project-based

**INCORRECT**

Anchored, Cooperative, Guided Focus, and Goal Focused

**CORRECT!**

Direct Instruction, Computer Module, Self-Study, and Facilitated

**INCORRECT**

**NEXT SLIDE**

What are the  
three basic forms  
of data  
representation?

# Data Management and Health Care Technology

## Category

Verbal, Analog, and  
Digital

**CORRECT!**

Graphical, Narrative,  
and Schematic

**INCORRECT**

Linear, Numeric, and  
Graphical

**INCORRECT**



**NEXT SLIDE**

What are the three components of the system selection process?

# System Design Life Cycle

## Category

Vendor comparison,  
System demonstration,  
and  
Cost comparison

**INCORRECT**

Needs Assessment,  
Request for Proposal  
(RFP), and  
Contract Negotiation

**CORRECT!**

Cost-Benefit Analysis,  
Gap Assessment, and  
User Acceptance

**INCORRECT**



**NEXT SLIDE**

What two steps  
are performed  
for data  
transformation?

# Data Management and Health Care Technology

## Category

Data Scrubbing and  
Regression Analysis

**INCORRECT**

Data Mapping and  
Code Generation

**CORRECT!**

Conversion Analysis  
and Universal  
Character Set  
Assignment

**INCORRECT**



**NEXT SLIDE**

Betty Neuman's total person systems model of nursing focuses on an individual's reaction to stress with which types of interventions?



## Foundations of Practice Category

Psychosocial,  
Pharmaceutical, and  
Physical

**INCORRECT**

Reframing,  
Removal, and  
Retraining

**INCORRECT**

Primary,  
Secondary, and  
Tertiary

**CORRECT!**

**NEXT SLIDE**

A feasibility study will help to define the problem(s) that a new information system is expected to address. What other questions should it answer?

## System Design Life Cycle Category

Marketing, User  
Acceptance, and  
Lifespan

**INCORRECT**

Cost, Goals, and  
Specific Outcomes

**CORRECT!**

Specific Team  
Members, Testing  
Strategy, and Project  
Tools

**INCORRECT**



**NEXT SLIDE**

What are the  
three major  
classes of  
computers?

# Data Management and Health Care Technology

## Category

Supercomputer,  
Mainframe Computer,  
and Minicomputer

**INCORRECT**

Cloud-Based, Virtual  
Machines, and  
Physical Towers

**INCORRECT**

Analog, Digital, and  
Hybrid

**CORRECT!**



**NEXT SLIDE**

Hildegard Peplau's interpersonal relations model of nursing focuses on the quality of the nurse-client interaction with the premise that patients deserved human care by educated nurses and should be treated with dignity and respect.



## Foundations of Practice Category

**TRUE**

**CORRECT!!!**

**FALSE**

**INCORRECT**

**NEXT SLIDE**



A scattergram is a graphic display of three or more variables plotted on a graph and with enough data input will begin to form a pattern.



# Data Management and Health Care Technology

## Category

**TRUE**

**INCORRECT**

**FALSE**

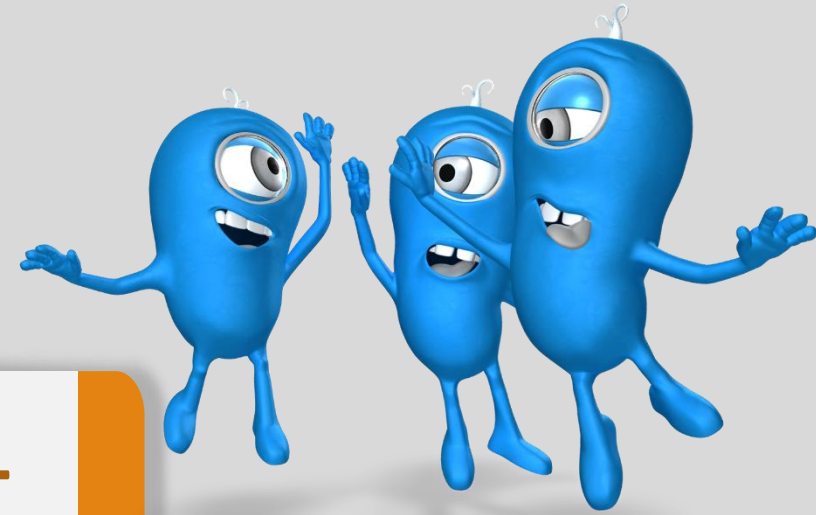
**CORRECT!**

**NEXT SLIDE**

Patricia Brenner developed the stages of clinical competence for nurses based on the Dreyfus Model of Skill Acquisition. What are the five stages?

# Foundations of Practice

## Category



Entry, Awareness,  
Internalization,  
Proficiency, and  
Mentor

**INCORRECT**

Novice, Advanced  
Beginner, Competent,  
Proficient, and Expert

**CORRECT!**

Introductory,  
Awareness,  
Demonstration,  
Competent, and Expert

**INCORRECT**

**NEXT SLIDE**

List three  
classification  
systems used in  
nursing  
informatics.

# System Design Life Cycle

## Category

AMA,  
NNCS, and  
HCIS-N

**INCORRECT**

NANDA-1,  
NIC, and  
NOC

**CORRECT!**

NNCS,  
ANCC, and  
NAANI

**INCORRECT**



**NEXT SLIDE**

What are the  
four different  
types of  
networks?

# Data Management and Health Care Technology

## Category

Local Area,  
Metropolitan Area,  
Wide Area, and  
Internet

**CORRECT!**

Local Area, Federal,  
Private, and Public

**INCORRECT**

Fiber Optic, Wireless,  
Cable, and Satellite

**INCORRECT**



**NEXT SLIDE**

What steps are involved in administering the system implementation process?

# System Design Life Cycle

## Category

Identify stakeholders,  
Team building, Build  
the system, and Test  
the system

**INCORRECT**

Develop a schedule,  
Assign tasks, Establish  
communication plan,  
and Test the system

**CORRECT!**

Feasibility study,  
Budgeting, Gain end  
user acceptance,  
Review lessons learned

**INCORRECT**



**NEXT SLIDE**

Systems theory, developed by Ludwig von Bertalanffy, is an approach that considers an entire system holistically in which all of the elements of a system and their interrelationships need to be understood. What are the five elements of a system?

# Foundations of Practice

## Category

Holism, Specificity,  
Interrelationships,  
Structure, and  
Throughput

**INCORRECT**

Components,  
interrelationships,  
Structure, Connectivity,  
and Value

**INCORRECT**

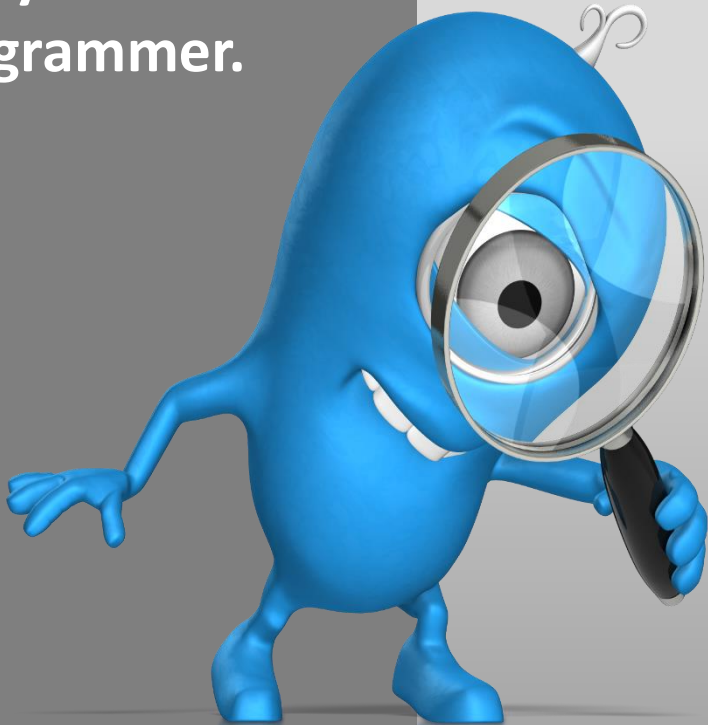
Input, Throughput,  
Output, Evaluation,  
and Feedback

**CORRECT!**



**NEXT SLIDE**

Functional testing is performed in the development phase of a system and is done from the perspective of the build analyst or programmer.



# System Design Life Cycle

## Category

**TRUE**

**INCORRECT**

**FALSE**

**CORRECT!**

**NEXT SLIDE**

What are the  
four different  
types of data?

# Data Management and Health Care Technology

## Category

Qualitative,  
quantitative, primary,  
and secondary

**CORRECT!**

Quantitative,  
quantitative, discrete,  
and non-discrete

**INCORRECT**

Discrete, non-discrete,  
linear, and parametric.

**INCORRECT**



**NEXT SLIDE**



Logical  
Observation  
Identifiers Names  
and Codes  
(LOINC) is a  
manual used to  
cross-reference  
CMS  
reimbursement  
rates for private  
sector insurance  
companies.

# System Design Life Cycle Category



**TRUE**

**INCORRECT**

**FALSE**

**CORRECT!**

**NEXT SLIDE**

Computer Science began before modern computers were invented and is the study of how information is manipulated to solve problems or answer questions.



## Foundations of Practice Category

**TRUE**

**CORRECT!!!**

**FALSE**

**INCORRECT**

**NEXT SLIDE**

It is not a requirement to use mathematical formulas to code data, also known as encryption, when transmitting patient information from a database to another location.

## Foundations of Practice Category

**TRUE**

**INCORRECT**

**FALSE**

**CORRECT!**



**NEXT SLIDE**

What are the six elements necessary in the formation of a system?

# System Design Life Cycle

## Category

Concept, Research,  
Requirements,  
Measurement,  
Execution, and Analysis

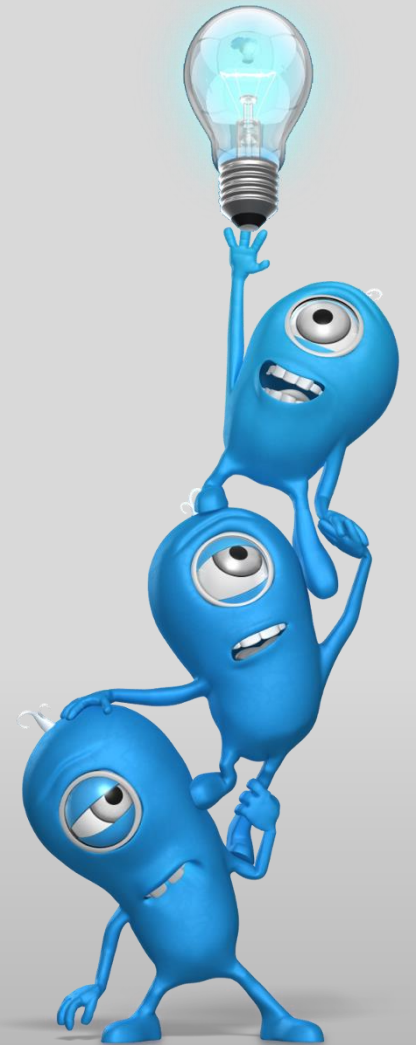
**INCORRECT**

Interdependency,  
Inputs, Process,  
Output, Control, and  
Feedback

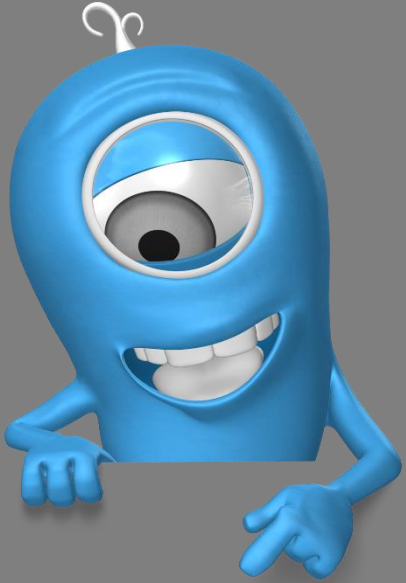
**CORRECT!**

Proposal, Evaluation,  
Plan, Assignments,  
Execution, and  
Maintenance

**INCORRECT**



**NEXT SLIDE**



Dorothy Orem's general theory of nursing is actually a collection of what three theories?

# Foundations of Practice

## Category

Self-care,  
Self-care Deficit, and  
Nursing Systems

**CORRECT!**

Holism,  
Evidence-Based, and  
Unconditional Regard

**INCORRECT**

Interpersonal,  
Transformational, and  
Unitary

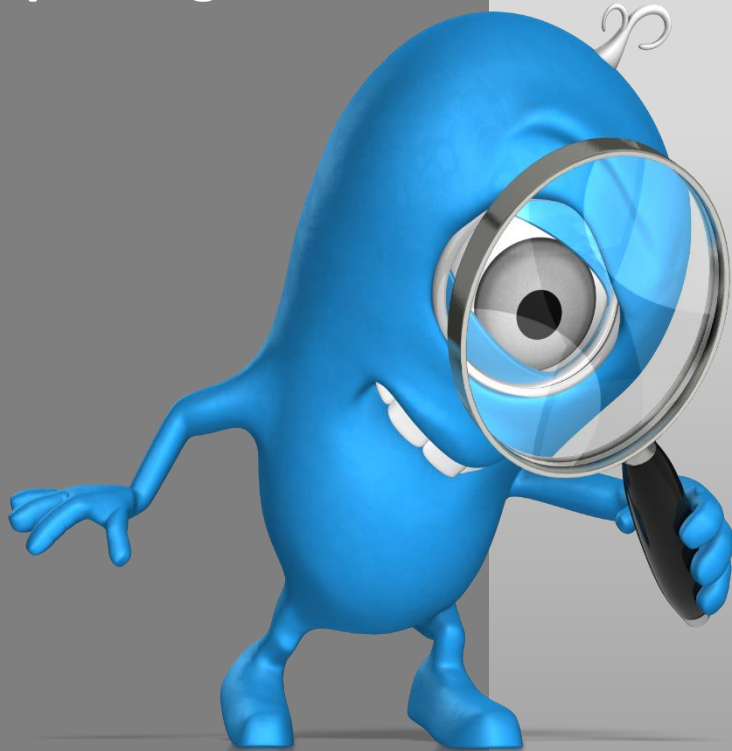
**INCORRECT**

**NEXT SLIDE**

ICD codes were developed by CMS and are used to track sociocultural variances based upon patient self reporting

# Data Management and Health Care Technology

## Category



**TRUE**

**INCORRECT**

**FALSE**

**CORRECT!**

**NEXT SLIDE**

Load or volume testing is a type of nonfunctional reliability testing that evaluates the system's ability to function under different loads and must be completed after the system is live.

## System Design Life Cycle Category

**TRUE**

**INCORRECT**

**FALSE**

**CORRECT!**



**NEXT SLIDE**

The Unicode standard coding scheme is a standardized coding system that has a large capacity and can be used to represent text for most languages.



# Data Management and Health Care Technology

## Category

**TRUE**

**CORRECT!!!**

**FALSE**

**INCORRECT**

**NEXT SLIDE**



What are the four primary characteristics of Martha Roger's theory of the science of unitary human beings?

## Foundations of Practice Category

Connectivity, Locus of Control, Individualization, and Self-Realization

**INCORRECT**

Solidarity, Individualization, Purpose, and Control

**INCORRECT**

Energy field, Openness, Pattern, and Pan-Dimensionality

**CORRECT!**



**NEXT SLIDE**

Quality information is defined by the following factors:

- Timeliness
- Precision
- Accuracy
- Measurability
- Independently verifiable
- Availability

# Systems Design Life Cycle

## Category



**TRUE**

**CORRECT!!!**

**FALSE**

**INCORRECT**

**NEXT SLIDE**

What are the different types of systems that a healthcare facility might use?

# Data Management and Health Care Technology

## Category

Internal, Bidirectional,  
Hierarchal, and  
External

**INCORRECT**

Clinical, Financial,  
Inventory, and Risk

**INCORRECT**

Decision Support,  
Expert, Artificial  
Intelligence, and  
Natural Language

**CORRECT!**



**NEXT SLIDE**

The human-computer interaction (HCI) framework by Nancy Staggers applies concepts related to psychology and technology to explain human interactions with computers over a period of time in different contexts. What are these contexts?

# System Design Life Cycle

## Category

Recreational use,  
Business use,  
Military use, and  
Health Care use

**INCORRECT**

Providers,  
Patients, and  
Interactions between  
providers and patients

**CORRECT!**

Novice,  
Competent,  
Experienced, and  
Expert

**INCORRECT**



**NEXT SLIDE**

Florence  
Nightingale, the  
founder of  
modern nursing,  
established which  
basic standards  
for patient care ?

# Foundations of Practice

## Category

Cleanliness, Patient  
Rights, and  
Documentation

**INCORRECT**

Repositioning Patients,  
Sunlight, and Daily  
Dressing Changes

**INCORRECT**

Sanitary Conditions,  
Adequate Nutrition,  
and Kindness

**CORRECT!**



**NEXT SLIDE**