



THE RIPPLE EFFECT IN CLINICAL INFORMATICS

2018 Clinical Informatics Conference

water-ripple-d-blue-splash-ripples-drops-free-60988.jpg

INFORMATICS APPLICATIONS FOR THE UNIVERSAL SCREENING OF INTIMATE PARTNER VIOLENCE AND HUMAN TRAFFICKING

Mary Ann Contreras RN
Heather Scroggins MSN, RN-BC
Judy Jeanes. BSN, RN



CONFLICT OF INTEREST DISCLOSURE

Marry Ann Contreras , Heather Scroggins, and Judy Jeanes
have no real or apparent conflicts of interest to disclose.

OBJECTIVES

- Recognize healthcare organizations have a unique opportunity to screen and refer patients for IPV and HT
- Identify the steps required to create a screening workflow for IPV and HT
- Justify the value of collaboration with internal stakeholders

JPS HEALTH NETWORK

\$950 million tax-supported healthcare system serving residents of Fort Worth and surrounding communities in Tarrant County, Texas.

John Peter Smith Hospital

- 370 emergency room visits per day
- Over 1.7 million patient encounters per year
- Nation's largest Family Medicine Residency
- 1st Public hospital to receive Joint Commission Certification in Geriatric Delirium



Patient Care Pavilion at John Peter Smith Hospital



Tarrant County's only
Level I Trauma Center

**Comprehensive
Level I Stroke
Center**



Tarrant County's
only Psychiatric
Emergency Center

Licensed
for 589
beds



40+ primary &
specialty health
centers (19 at
public schools)

204,810
unique patients



6,500 Team Members



17 residency and
fellowship programs

HEALTHCARE IPV FINDINGS



12%

**3
Encounters**



INTIMATE PARTNER VIOLENCE KILLS 2016

HONORING TEXAS VICTIMS

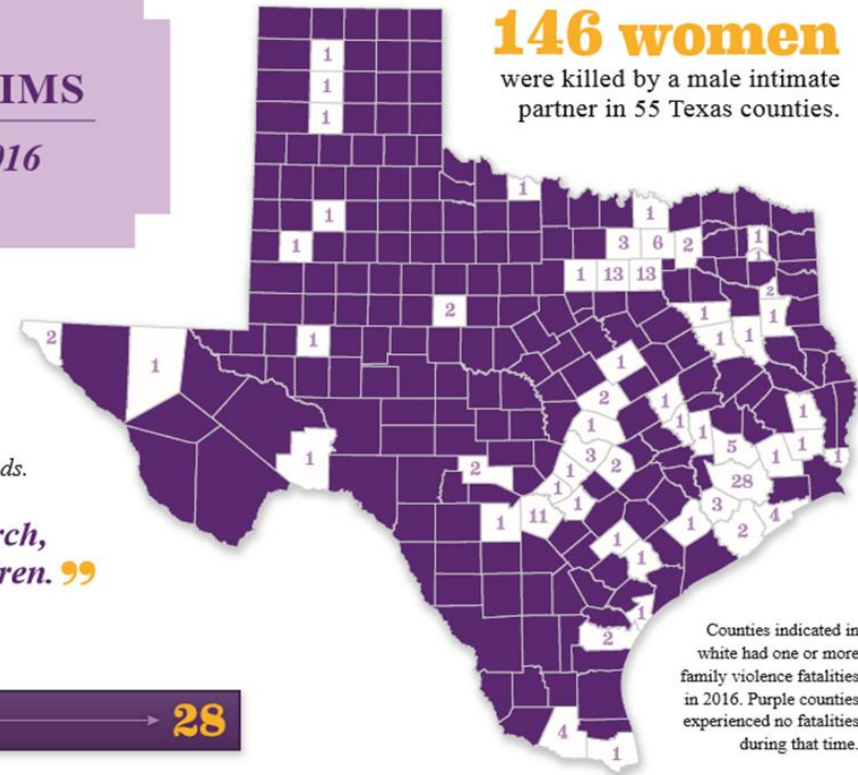
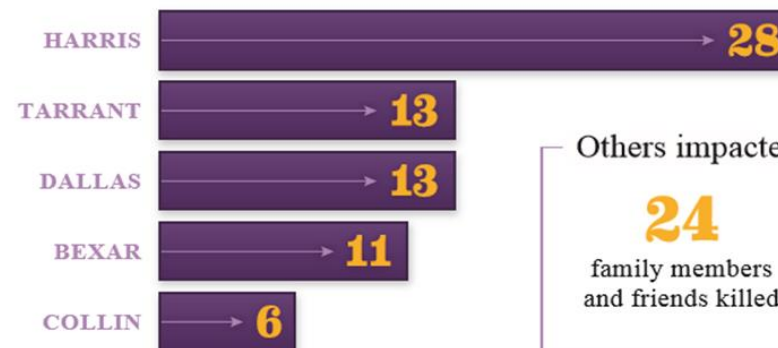
By the Numbers Summary for 2016

Each year, the Texas Council on Family Violence identifies women killed by male intimate partners to both honor their memories and raise awareness.

These statistics represent women remembered for brightening the lives of those around them as loving mothers, caring family members, and dedicated friends.

“She loved life, her family, her church, and more than anything, her children.”

Counties with the most fatalities:



Others impacted:

24
family members
and friends killed

4
family members
and friends injured

183
children lost
a parent

2017 NUMBERS

Honoring Texas Victims | 2017

By the Numbers Summary

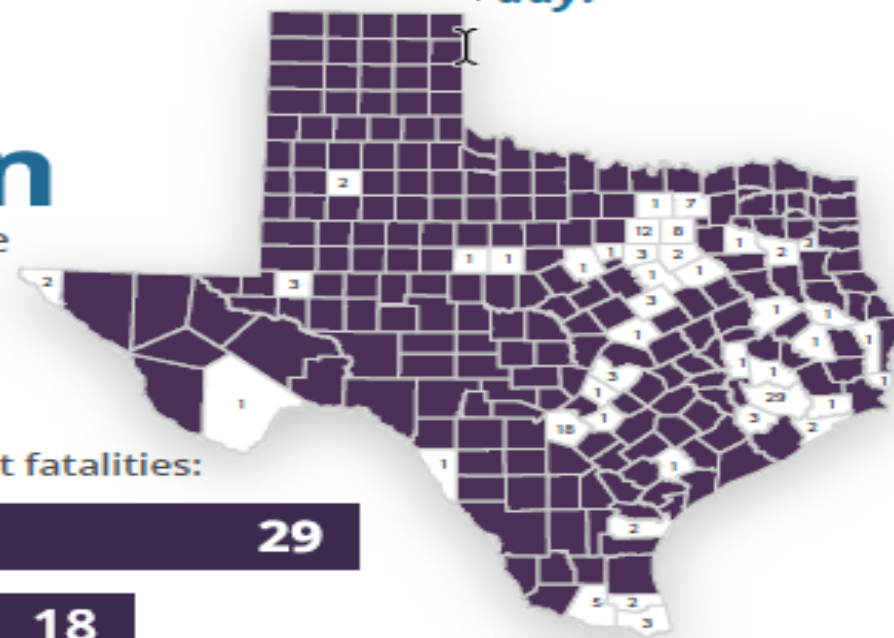
Each year, the Texas Council on Family Violence identifies women killed by male intimate partners to both honor their memories and raise awareness.

These statistics represent women remembered for brightening the lives of those around them as loving mothers, caring family members, and dedicated friends.

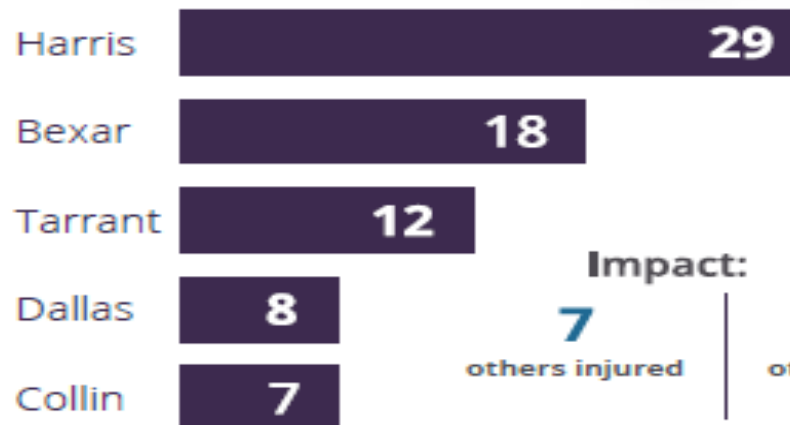
"She was just an awesome, awesome girl. We miss her dearly every day."

136 women

were killed by a male intimate partner in 42 Texas counties in 2017.



Counties with the most fatalities:



Impact:

7
others injured

15
others killed

211
children lost a parent

IPV: PUBLIC HEALTH CONCERN

1:5 children are exposed to IPV/year

90% of children witness the physical violence in an abusive relationship

Boys who are exposed to violence repeat it

2016: \$9 Billion dollars for DV healthcare





HUMAN TRAFFICKING

- Modern day slavery
- Labor or sex trafficking
- Coercion
- Traffickers prey on vulnerable

The Major Types of Trafficking

Under Texas law we divide trafficking into four types:

1. Trafficking of adults for forced labor, for instance in agriculture, food service, factory work or sales;
2. Trafficking of adults for sex, in strip clubs, brothels, massage parlors, street or internet prostitution;
3. Trafficking of children under the age of 18 for forced labor; and
4. Trafficking of children under the age of 18 for sex. An individual can be trafficked into any industry or type of work. Legally, someone is trafficked if force, fraud or coercion is applied to make the trafficked person work or if a child under the age of 18 is trafficked for sex by any means, regardless of whether the trafficker has to use force, fraud or coercion.



LOW SELF ESTEEM



BE THE ONE

IN THE FIGHT AGAINST HUMAN TRAFFICKING

PREVENT ★ RECOGNIZE ★ REPORT



Human Trafficking

Types of Human Trafficking

Buyers and Sellers in Human Trafficking

Misconceptions with Human Trafficking

Red Flags for Minor and Adult Sex Trafficking

Red Flags for Labor Trafficking

You Can Be The One

Helpful Information

Human Trafficking

Human trafficking is modern day slavery. Kevin Bales of Free the Slaves defines it as “a relationship in which one person is controlled by violence through violence, the threat of violence, or psychological coercion, has lost free will and free movement, is exploited economically, and paid nothing beyond subsistence.”



AWHONN POSITION STATEMENT

“Nurses are ideally positioned to screen, identify and care for, provide services for and support victims of human trafficking.”

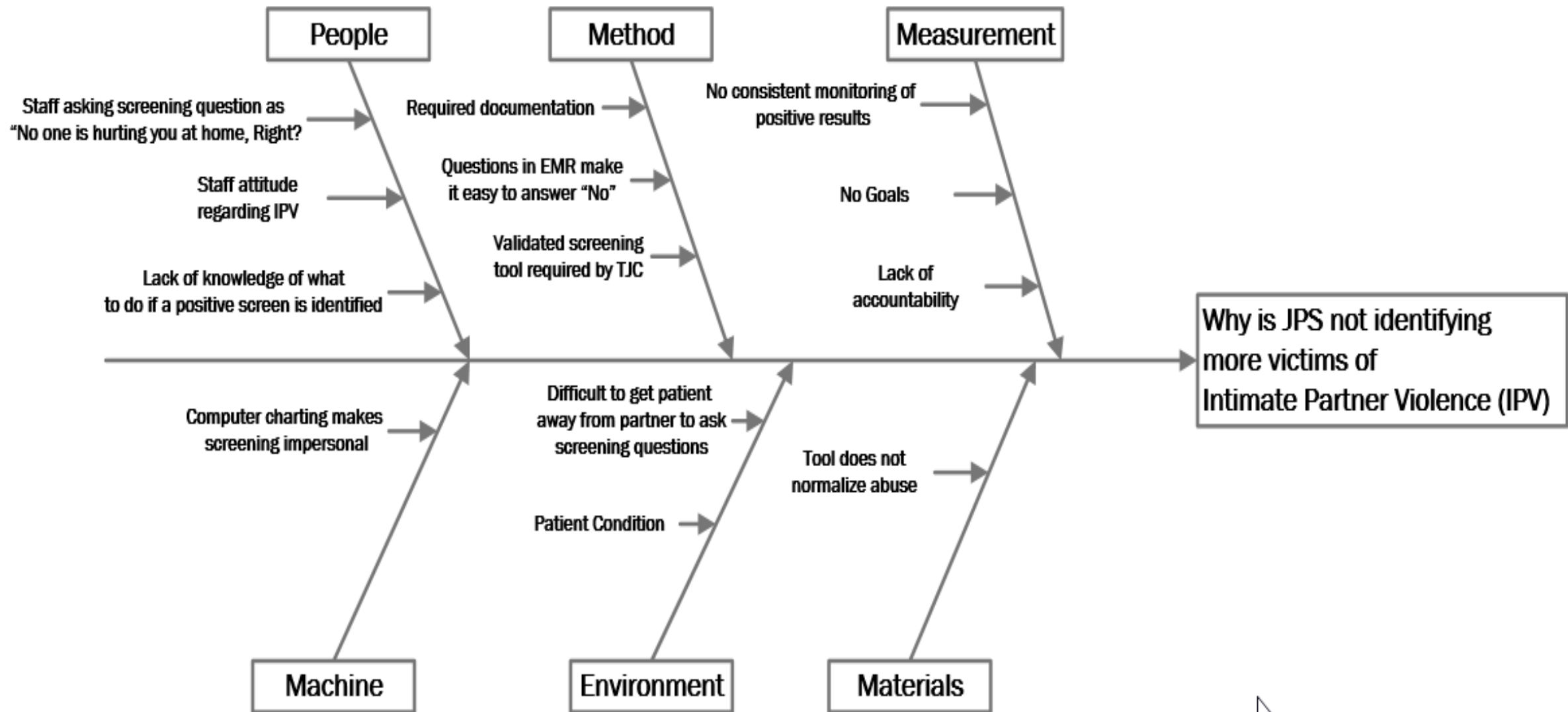
GRANT PROCESS

City of Fort Worth
offered a Grant to
support the *Stop the Cycle
of Violence* program



WHY DID WE NEED TO LOOK AT THE PROCESS







ABUSE SCREENING TOOL

Abuse Screen

Do You Feel That You Are Treated Well By Your Partner/Spouse/Family Member?

☐ yes ☐ no ☐ unable to assess ☐ other (see comments)

Domestic Abuse Assessment: 12/13 0858 - 12/16 1136

What Happens When You Argue/Fight With Your Partner/Spouse/Family Member?



Domestic Abuse Assessment: 12/13 0858 - 12/16 1136

Are You or Have You Been Threatened or Abused Physically, Emotionally, or Sexually By A Partner/Spouse/Family Member?

☐ yes ☐ no ☐ unable to assess ☐ other (see comments)

Domestic Abuse Assessment: 12/13 0858 - 12/16 1136

Has Anyone Ever Threatened to Hurt Your Children or Your Pets?

☐ yes ☐ no ☐ unable to assess ☐ other (see comments)

Domestic Abuse Assessment: 12/13 0858 - 12/16 1136

Show: ☐ Deleted ☒ Status Changes ☒ Flowsheets/Assessments ☒ Tx Tm ☒ Orders ☒ Med Admin

Domestic Abuse Assessment: 12/13 0858 - 12/16 1136

Does Anyone Try to Keep You From Having/Contacting Other Friends or Doing Things Outside Your Home?

☐ yes ☐ no ☐ unable to assess ☐ other (see comments)

Domestic Abuse Assessment: 12/13 0858 - 12/16 1136

Do You Feel Unsafe Going Back to the Place Where You Are Living?

☐ yes ☐ no ☐ unable to assess ☐ other (see comments)

Domestic Abuse Assessment: 12/13 0858 - 12/16 1136

Abuse Screen Comment



✓ Accept

✗ Cancel

NURSE RESIDENCY VALIDATING THE TOOL

How often does your partner?	Never	Rarely	Sometimes	Fairly Often	Frequently
1. Physically hurt you					
2. Insult or talk down to you					
3. Threaten you with harm					
4. Scream or curse at you					
	1	2	3	4	5
Total Score:					

EVIDENCED BASED TOOL

HITS

- Hurts
- Insults
- Threatens
- Screams

H.I.T.S. Screening - HITS Screening

Time taken: 1255 1/18/2018

Show: ☒ Row Info ☒ Last Filed ☐ Details ☒ All Choices

Values By + Create Note

▼ H.I.T.S. Screening

4

How often does your partner physically hurt you?

1=Never 2=Rarely 3=Sometimes 4=Fairly often 5=Frequently

1

How often does your partner insult or talk down to you?

1=Never 2=Rarely 3=Sometimes 4=Fairly often 5=Frequently

2

How often does your partner threaten you with harm?

1=Never 2=Rarely 3=Sometimes 4=Fairly often 5=Frequently

3

How often does your partner scream or curse at you?

1=Never 2=Rarely 3=Sometimes 4=Fairly often 5=Frequently

HITS SCORE

12

Each item is score from 1-5. Thus, scores for this inventory range from 4-20. A score of greater than 10 is considered positive.

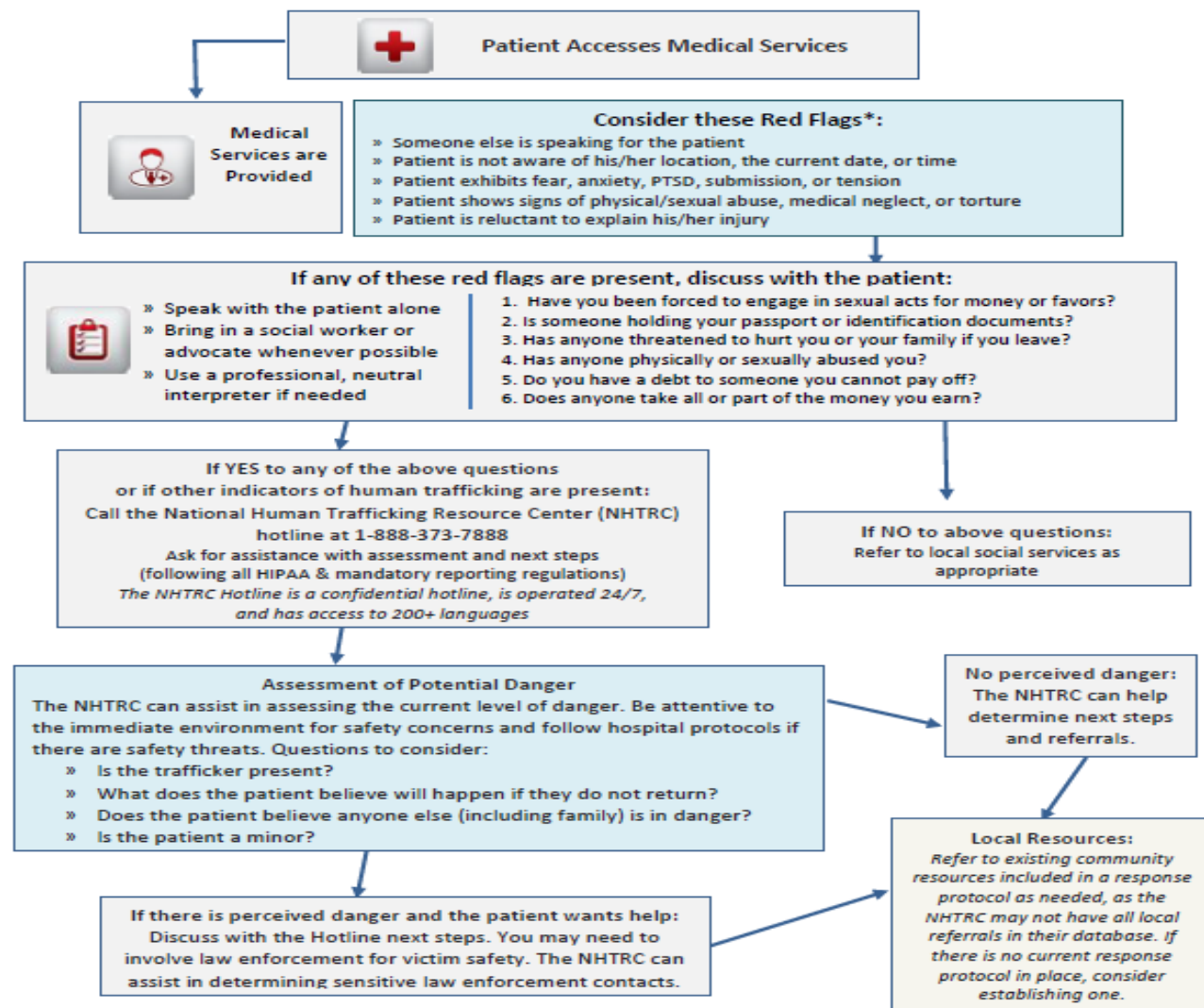
Restore Close Cancel Previous Next

HUMAN TRAFFICKING ASSESSMENT FOR MEDICAL PROFESSIONALS

NHTRC
1-888-373-7888

NATIONAL
HUMAN TRAFFICKING
RESOURCE CENTER

Human Trafficking Assessment Tool for Medical Professionals



*For more red flags and indicators see the NHTRC's [Comprehensive Assessment Tool](#) and [Identifying Victims of Human Trafficking](#) document for healthcare providers.

Report Online or Access Resources & Referrals: www.traffickingresourcecenter.org

Call: 1-888-373-7888 (24/7)

Email: nhtrc@polarisproject.org

This publication was made possible in part through Grant Number 90ZV0102 from the Anti-Trafficking in Persons Division, Office of Refugee Resettlement, U.S. Department of Health and Human Services (HHS). Its contents are solely the responsibility of the authors and do not necessarily represent the official views of the Anti-Trafficking in Persons Division, Office of Refugee Resettlement, or HHS.

Red Flags for Minor and Adult Sex Trafficking

- Changes in their school attendance habits, appearance, socio-economics, friend groups, interests, school activities, vocabulary, demeanor, attitude and sexual behavior
- Luxury items like manicures, designer clothing, purses, etc. without an explainable source of income
- Truancy
- Getting into trouble in the company of older teens or adults
- Sexually provocative clothing
- Tattoos or branding
- Refillable gift cards
- Multiple phone or social media accounts
- Lying about the existence of those accounts or refusing parent access to those accounts
- Sexually provocative pictures on the phone or online accounts
- Unexplained injuries: bruising, swelling, redness, cigarette burns
- Third-party control of schedule and social interaction
- Isolation from community, family or friends

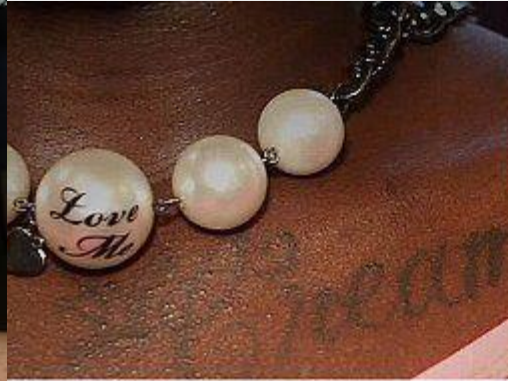


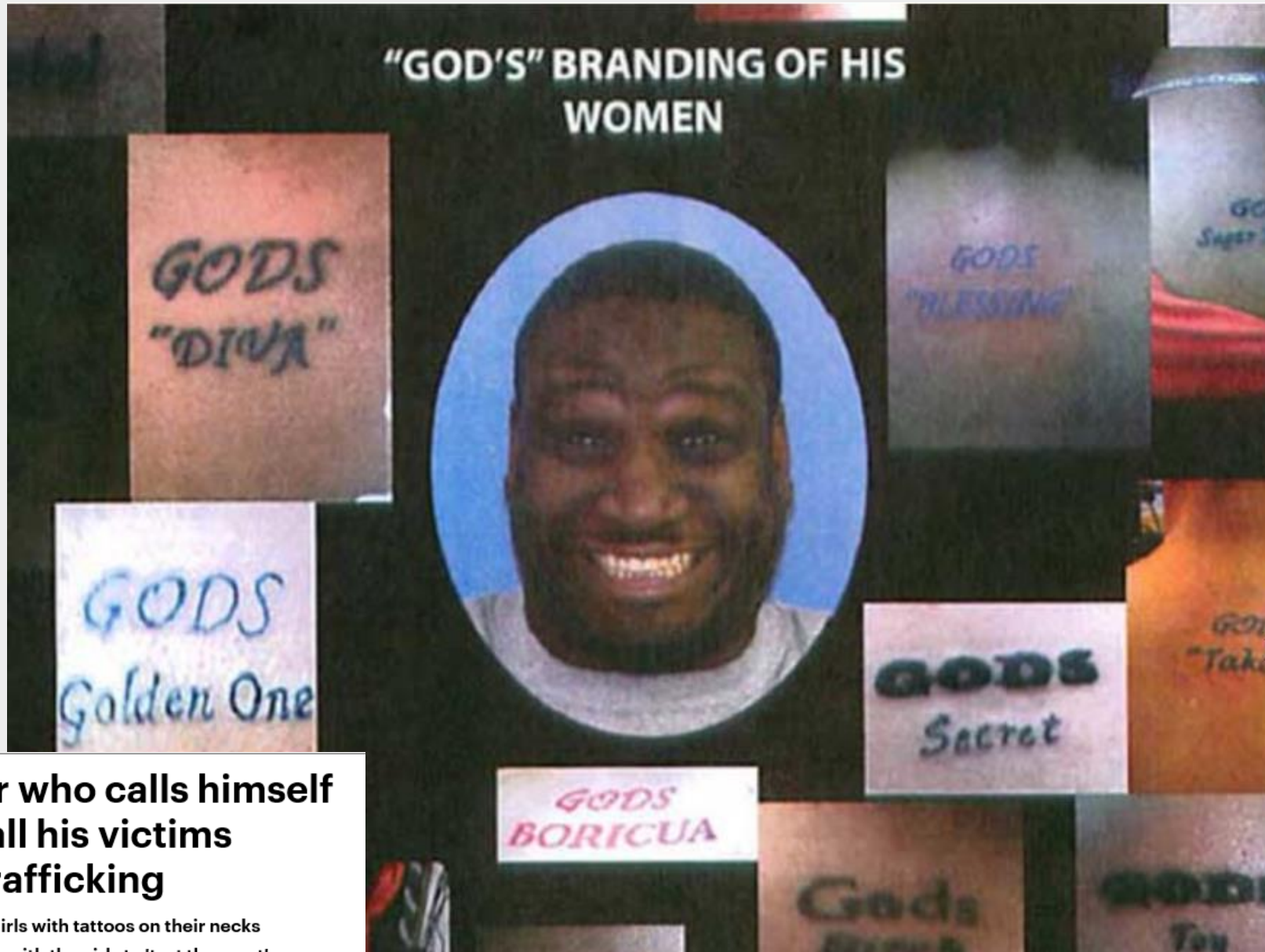
HUMAN TRAFFICKING RED FLAGS

Initial Human Traffic Red Flags:

- Odd and often changing story behind source of injury
- Someone speaking for patient or appears controlling of what patient says
- Patient unsure of their location
- Suicide attempt
- Psychogenic non-epileptic seizure (pseudo seizure)
- Chief complaint of UTI, pelvic or abdominal pain
- Branding or tattoos with words like “Daddy”, Property of...
- Offering to pay cash for visit

HUMAN TRAFFICKING TATTOO





Ex-school counselor who calls himself 'God' and tattooed all his victims sentenced for sex trafficking

- Paul Swell would 'brand' the exploited girls with tattoos on their necks
- The 49-year-old would insist on sleeping with the girls to 'test them out'
- Philadelphia man has now been sentenced to 23 years in prison for crimes

Time taken: 1504 2/1/2018

Show: ☒ Last Filed ☐ All Choices

Values By [+ Create Note](#)

▼ HITS Screening

How often does your partner insult or talk down to you?

1=Never 2=Rarely 3=Sometimes 4=Fairly often 5=Frequently

3=Sometimes

by Richardson, Tiffany, RN
at 02/01/18 1407

1. When asking the screening questions, please make sure the patient is alone (away from visitors). Please say to patient prior to asking the HITS screening "As part of your health assessment today I am going to ask you four survey questions that will determine your risk of violence in the home. The answers to the question will be a range that includes, never, rarely, sometimes, fairly often or frequently."

How often does your partner threaten you with harm?

1=Never 2=Rarely 3=Sometimes 4=Fairly often 5=Frequently

3=Sometimes

by Richardson, Tiffany, RN
at 02/01/18 1407

How often does your partner scream or curse at you?

1=Never 2=Rarely 3=Sometimes 4=Fairly often 5=Frequently

3=Sometimes

by Richardson, Tiffany, RN

How often does your partner physically hurt you?

1=Never 2=Rarely 3=Sometimes 4=Fairly often 5=Frequently

3=Sometimes

by Richardson, Tiffany, RN
at 02/01/18 1407



HITS SCORE

12

12 (calculated)

Domestic Abuse Screening: 4/20 1700 - 4/24 1224
1=Never
by Johnson, Ryne, RN
at 04/23/18 1720

How often does your partner physically hurt you?

☐ 1=Never ☒ 2=Rarely ☐ 3=Sometimes ☐ 4=Fairly often
☐ 5=Frequently

Domestic Abuse Screening: 4/20 1700 - 4/24 1224
1=Never
by Johnson, Ryne, RN
at 04/23/18 1720

HITS SCORE

8
4 (calculated)
by Johnson, Ryne, RN
at 04/23/18 1720

A HITS score of 10 or greater and/or a red flag identified require the completion of the Human Trafficking screening. Say to the patient "Your answers concern me for your safety. No one deserves to be abused. We have some resources available for you that we can discuss."

* Please provide a phone and encourage calling
*Safe Haven: 24 hr Hotline 1-877-701-SAFE (7233)
www.safehavenntc.org or 817-535-6462.

**Children 17 years or younger, with a positive score (greater than 9) require police and CPS notification.

HUMAN TRAFFIC RED FLAGS



Human Traffic Red Flags



Odd or changing story behind source of injury

Someone speaking for the patient or appears controll... ^

Patient unsure of location

Suicide attempt

psychogenic non-epileptic seizure

Chief complaint of UTI, pelvic or abdominal pain

Branding or tattoos with words like "Daddy"

Offering to pay cash for visit

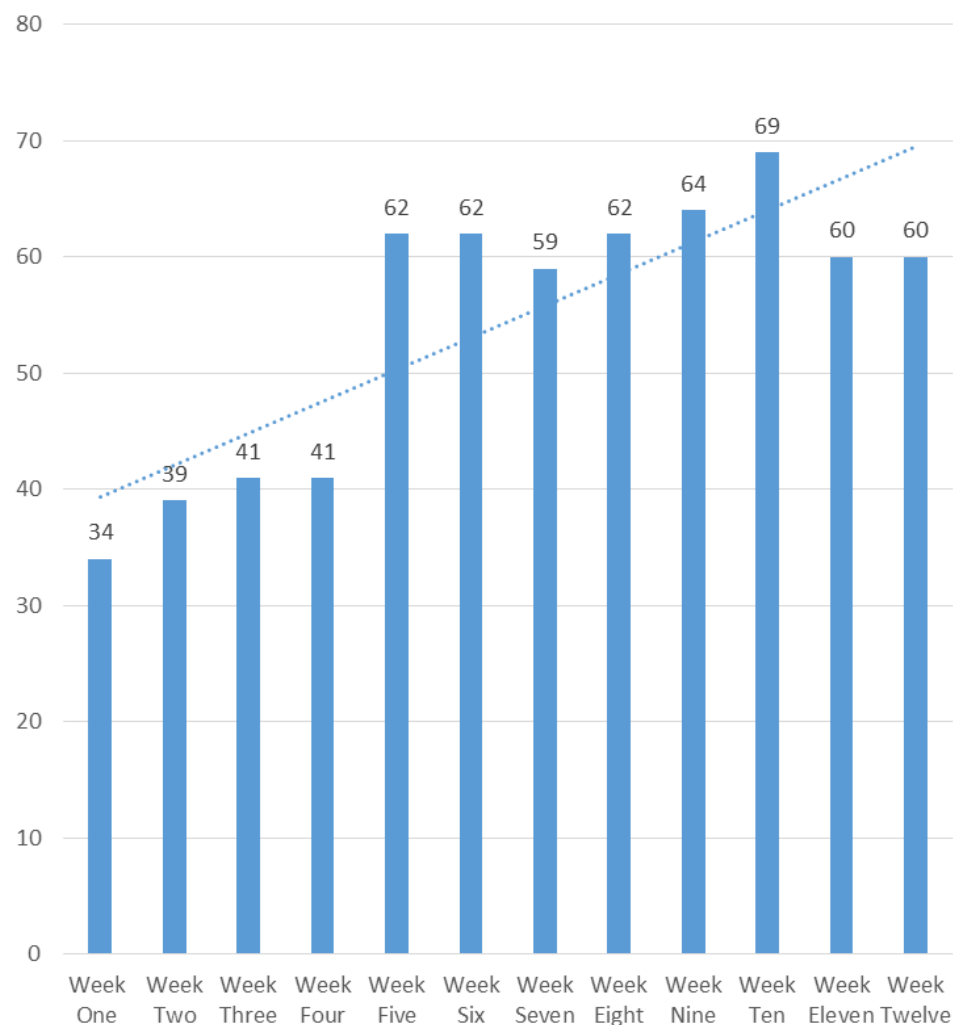
Patient unsure of location; Branding or tattoos with words like "Daddy"; Offering to pay cash for visit

by Richardson, Tiffany, RN

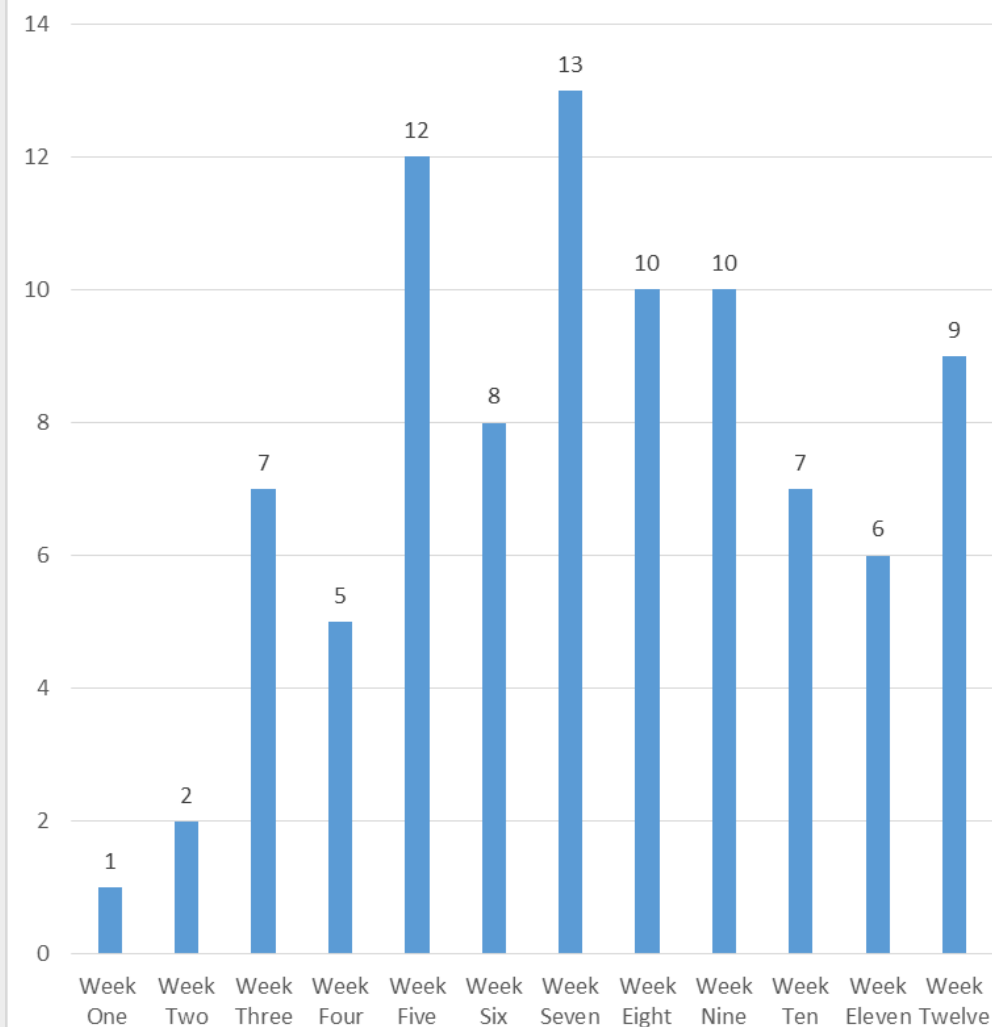
at 02/01/18 1407

1ST PHASE EMERGENCY DEPARTMENT PILOT RESULTS

Percentage of HITS Completions

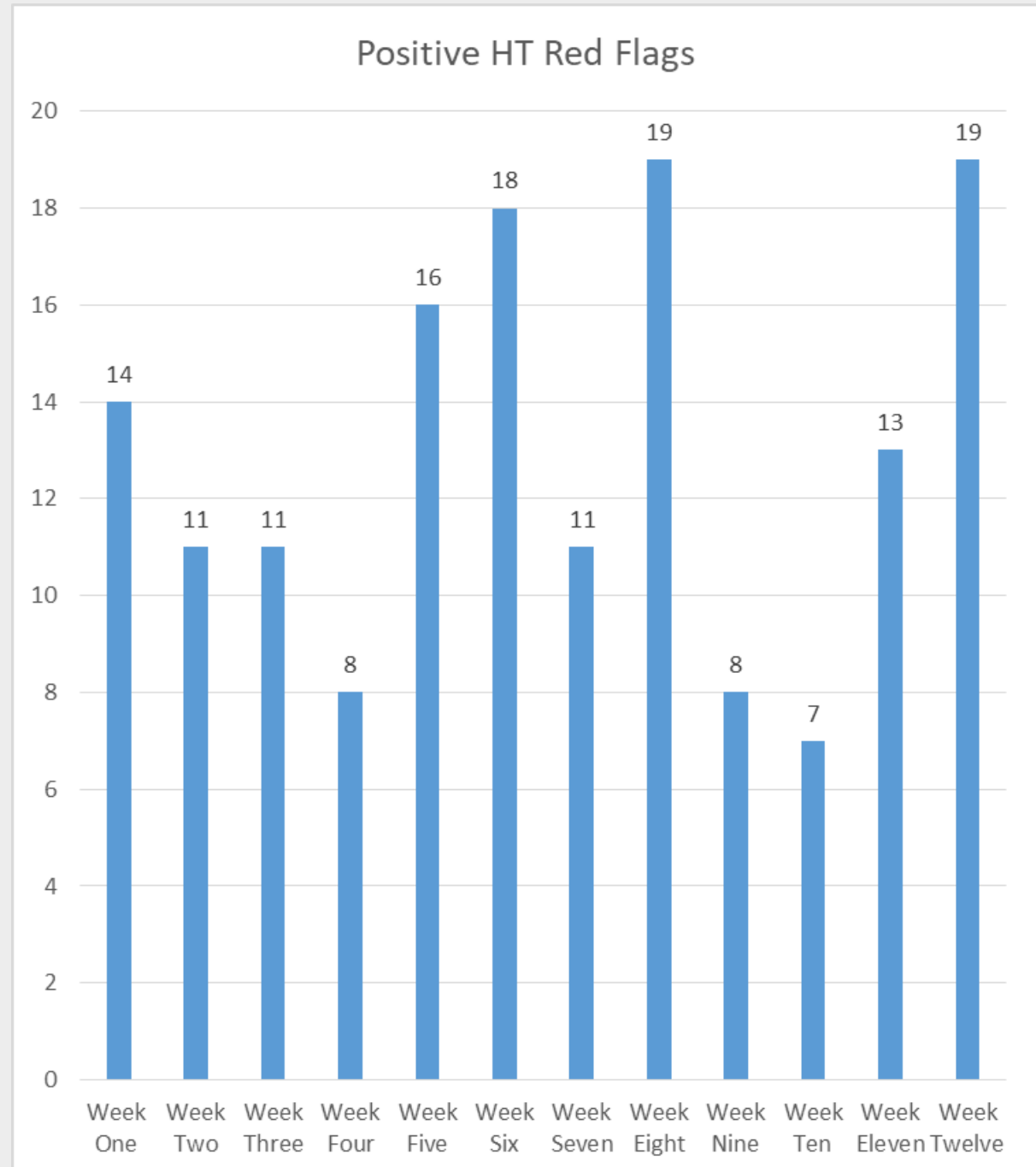


Positive HITS

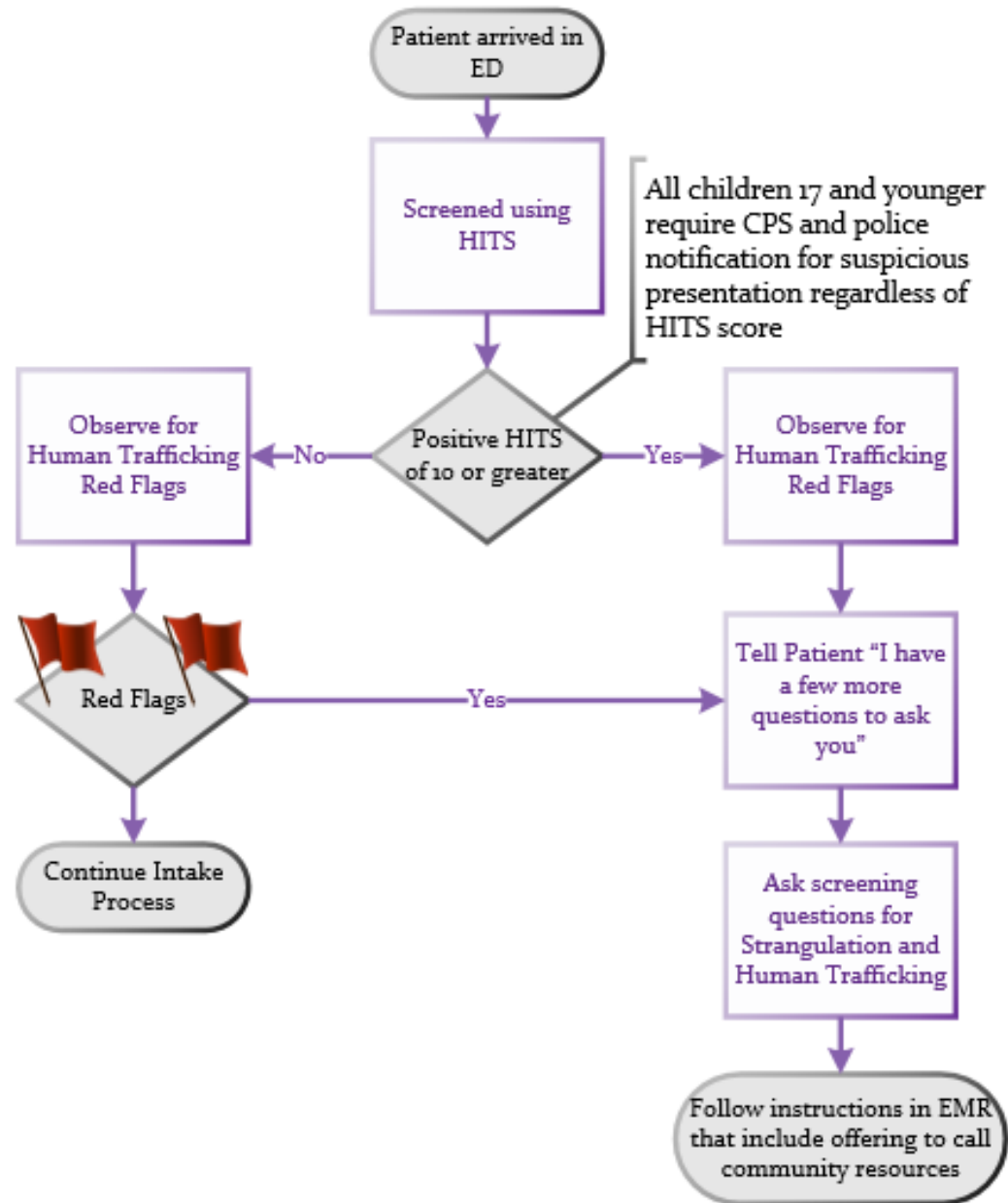


HUMAN TRAFFIC RED FLAGS

- Numbers excluded Chief Complaint of UTI, Pelvic or Abdominal pain.
- Red Flags re-evaluated



CREATION OF AN ALGORITHM



HUMAN TRAFFIC RED FLAG CHANGES



Human Traffic Red Flags



Odd or changing story behind source of injury



Someone appears to be speaking for or controlling what is being said

Patient unsure of location

Suicide attempt

Psychogenic non-epileptic seizure

Chief complaint of pelvic pain or rectal trauma

Suspicious tattoos : i.e. money signs/bags, "Daddy's Girl" or man's name

Suspicion that something is not right, "gut feeling"

No flags noted

Someone appears to be speaking for or controlling what is being said

by Richardson, Tiffany, RN

at 05/25/18 0823



HUMAN TRAFFICKING SCREENING

The Human Trafficking questions

Can you leave your job situation if you want? Yes-0 No-1

Can you come and go as you please? Yes-0 No-1

Have you or your family been threatened if you try to leave Yes-1 No-0

Have you been harmed in any way? Yes-1 No-0

Do you sleep where you work? Yes-1 No-0

Have you ever been deprived of food, water, sleep or medical care? Yes-1 No-0

Do you need to ask permission to eat, sleep or go to the bathroom? Yes-1 No-0

Has your ID/Documents been taken from you Yes-1 No-0

Is anyone forcing you to do anything you do not want to do? Yes-1 No-0

A Positive score is calculated

SCREEN SHOT OF HT

▼ Human Trafficking Questions

Can you leave your job or situation if you want?	!	0=yes	1=no
Can you come and go as you please?			
Have you been threatened if you refuse to leave?	!	1=yes	0=no
Have you been physically harmed in any way?			
Do you sleep where you work?		1=yes	0=no
Have you ever been deprived of food, water, sleep or medical care?			
Do you have to ask permission to eat, sleep or go to the bathroom?		1=yes	0=no
Has your identification or documentation been taken from you?	!	1=yes	0=no
Is anyone forcing you to do anything that you do not want to do?		1=yes	0=no

HITS Positive only

** If score is greater than 10 please say to patient. "Your score concerns me for your safety. No one deserves to be abused. We have some resources available for you that we can discuss."

- Please provide a phone and encourage calling.
- Safe Haven: 24 hour Hotline 1.877.701.SAFE (7233) www.safehavenntc.org 817.535.6462

If after resources are offered patient denies wanting to call right now, please say: "You may not need a referral now, but should you need help in the future you will have the information and can make the call then."

**Children 17 year or younger with a positive score (greater than 10) require police and CPS notification. Score of 10 is not a requirement of notification if other signs of abuse or neglect are present.

Human Trafficking Positive alone or with Positive HITS

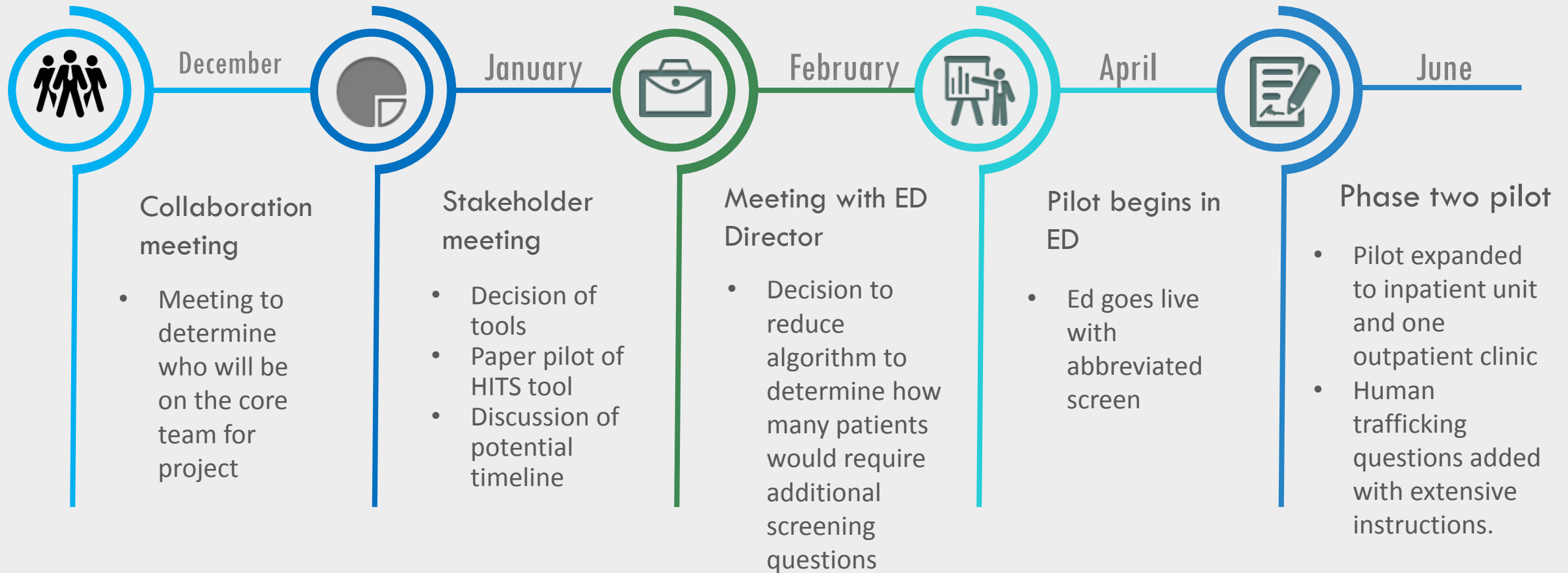
**A positive Human Trafficking screen is one or a combination of positives. If patient is positive, take them from their room to a designated location in your department. Ask the patient if they would like to contact one of the resources. Provide a phone and ask if the patient would like assistance calling.

Offer resources in this order

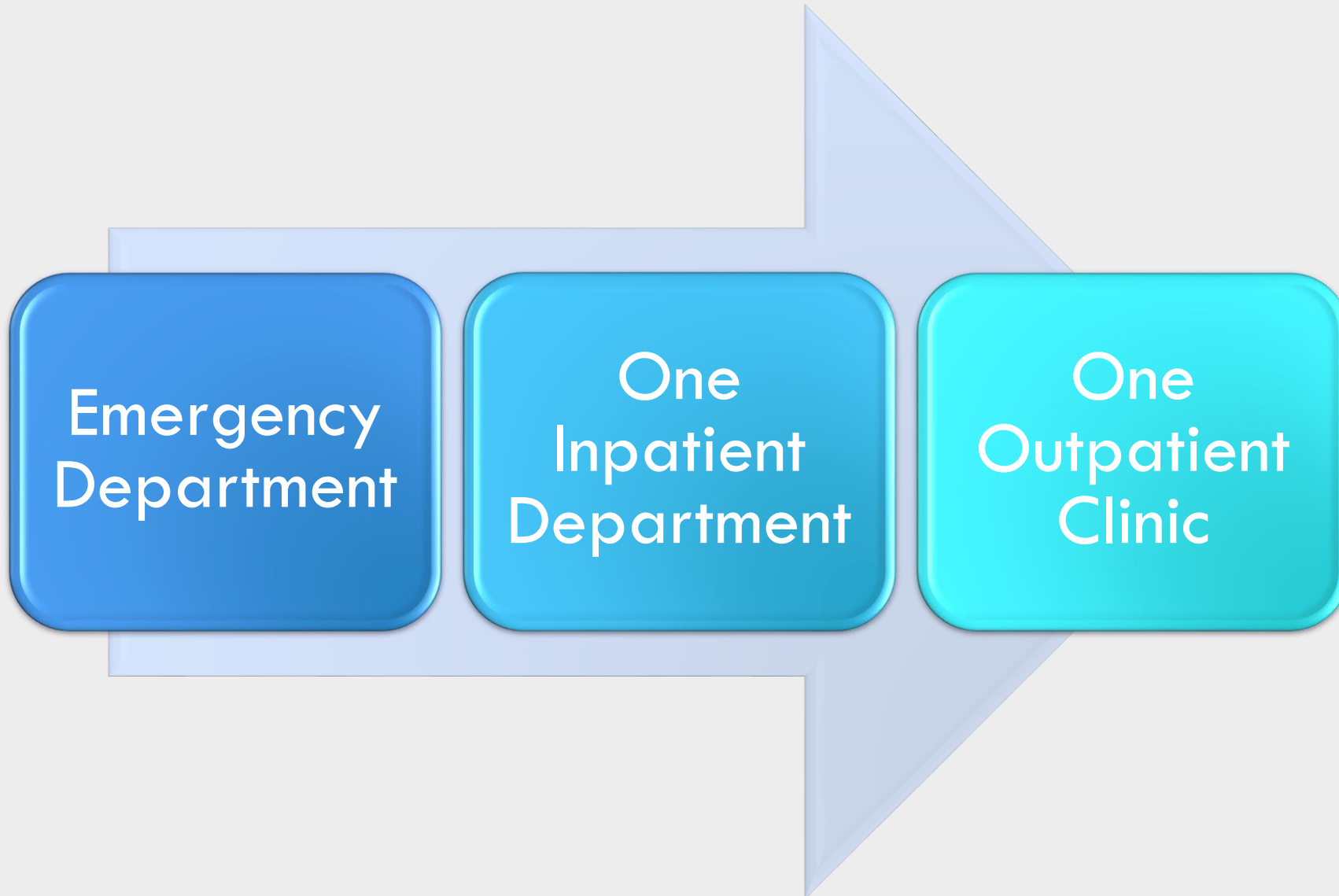
- National Human Trafficking Hotline: : 1.888.373.7888
- Safe Haven: 24 hour Hotline 1.877.701.SAFE (7233) www.safehavenntc.org 817.535.6462
- Police call 911

If the adult is not ready to leave their trafficked situation, their **decision must be respected**. This facilitates a sense of trust and safety with the provider team. Resources should be delivered in a safe way and encourage patient to return to receive further medical care or when ready to be rescued.

IPV Human Trafficking Project



PILOT UNITS



LESSONS LEARNED

Get the right people
at the table.



ADDITION OF STRANGULATION QUESTION

▼ Strangulation and Choking



Has your partner ever used their body or any other object to forcibly strangle/choke you?



1=yes

0=no

Did you experience any of the following during/after strangulation/choking?



difficulty swallowing

neck tenderness

voice changes

loss of bladder or bo...

loss of memory

loss of consciousness

"Your answer regarding strangulation is concerning. People who are strangled are 700 percent more likely to die as a result of violence".

Notify provider of the occurrence of strangulation to determine if further diagnostic tests are required.

KNOW WHAT IS GOING ON IN YOUR ORGANIZATION

Women's Services



The Joint Commission Survey



BARRIERS

- Nurses personal opinions
- Uncomfortable asking the questions
- Personal history regarding IPV



2ND PHASE PILOT RESULTS

Results:

Results are from March to August of 2018.

Tracking of referrals did not begin until late June

RESULTS OF 33,000 SCREENINGS FOR IPV AND HT



FUTURE GOALS

Second Grant from CCPD

Areas to include

Urgent Care Center

OB Triage

Women's Main Clinic

Organization Goals

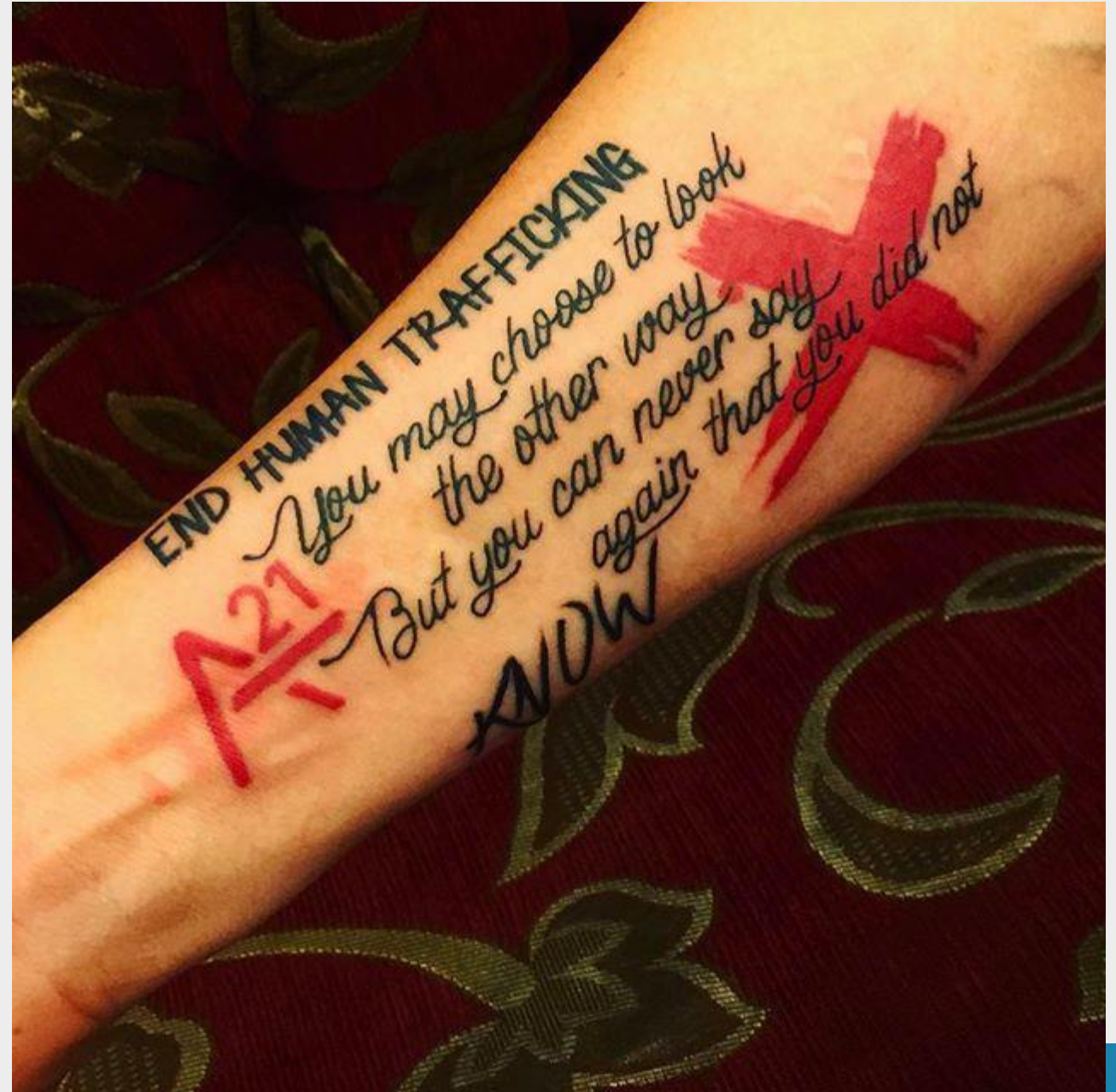
Develop department of Forensic Nurses to track patients throughout hospital.

Expand to all areas of the Network

Be an exemplar of IPV and HT screening and share workflow

WORDS TO CLOSE WITH

You may choose to look the other way but you can never say again that you did not know...



REFERENCES

- Association of Women's Health Obstetric and Neonatal Nurses (2016). AWHONN Position Statement. Human Trafficking
- Shandro J.R., Chisolmstraker, M., Duber, H.C., Findlay, S.L., Munoz, J., Schmitz, G., Stanzer, M., Stoklosa, H., Wiener, D.E., Wingkun, N. (2016). Human Trafficking: A guide to identification and approach for the emergency physician. Annals of Emergency Medicine. 68(4), 501-508e. DOI: <https://doi.org/10.1016/j.annemergmed.2016.03.049>
- Texas Council on Family Violence (2017). Learn the facts. Retrieved from <http://tcfv.org/resource-center/learn-the-facts/>
- The Joint Commission (2017). Comprehensive Accreditation Manual for Hospitals, Standard PC.01.02.09. Retrieved from https://www.jointcommission.org/assets/1/6/EP_Review_AHC_Phase_III_PrePub.pdf
- Polaris, (2017). National human trafficking hotline: Hotline statistics. Retrieved from <https://humantraffickinghotline.org/states>



QUESTIONS

Mary Ann Contreras MContr01@ipshealth.org

Heather Scroggins hscroggi@ipshealth.org

Judy Jeans JThomp01@ipshealth.org