



# Officers

## November, 2018

Click on photo to go to Officer's LinkedIn Page

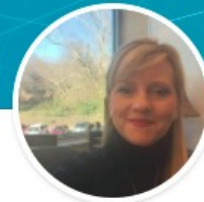


**Mark Bassett, MAS, RN**

Lead Software Designer

Meditech • The Johns Hopkins University

**Founding President**



**Christine Sumner MSN RN • 2nd**

Director of Clinical Informatics

Tanner Health System • Walden University

**Founding "Vice-President"**



**John Milner • 2nd**

Clinical Instructor at Georgia State University

Georgia State University • Georgia Regents University

**Founding Treasurer**



**Scarlette Hunter • 3rd**

Quality Practice Advisor at WellCare Health Plans Inc of Georgia

WellCare Health Plans Inc of Georgia • University of Phoenix

**Founding Secretary**



**Tracee Tomlinson, MS, RN-BC, CPHIMS • 3rd**

Improving the health and well-being of individuals and communities

Morehouse School of Medicine • Georgia State University

**Founding Board Member**